

PROSEARCH™

Search **prior art**

and examine knowledge already in existence about an invention to eliminate R&D wasted time and budget from the development of existing technology.

Search **patentability**

to avoid unsuccessful patent applications.

Search **competitive intelligence**

to monitor and map competitor's technology directives..

Understand **technology trends**,

discover new business **opportunities** and find licensing and enforcement opportunities to generate additional revenue.

Search for **infringement**

to identify and protect all existing patent assets and mitigate risk from validity challenges or litigation.

ProSearch™ is the most advanced artificial intelligence based patent search engine.

It is not just another patent search tool, it's the industry's only international Latent Semantic Analysis patent information research solution with advanced linguistic search capabilities. Using full text search queries comprised from natural language, ProSearch finds highly relevant patents that Boolean keyword patent search tools miss... every time!

Search technology is advancing and ProSearch™ IS your competitive knowledge advantage. It identifies prior art "deemed most closely related" in accordance with USPTO Examination Guidelines, even if the patents don't contain the primary words used in the search query!

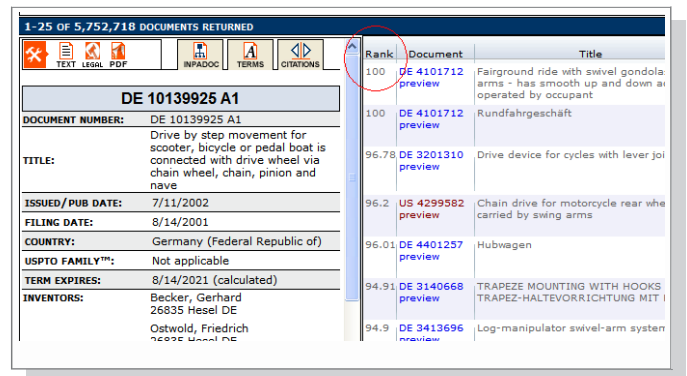
FEATURES

ProSearch is used whenever there is a need to search the international patent data collection. ProSearch allows users to search using Semantic search (full text natural language search queries), Boolean keyword or patent number searches, or a combination of Semantic and Boolean, called Heuristic Boolean or Advanced Boolean search.

Only with ProSearch your search results are returned and ranked by the relevance beginning at 100%, so ALL patents contained in the authorities you selected will be returned in the results list. Your focus can now be on search results that rank high in relevance instead of just results containing a keyword, as these will usually contain every patent reasonably teaching the content that you entered as the search query.

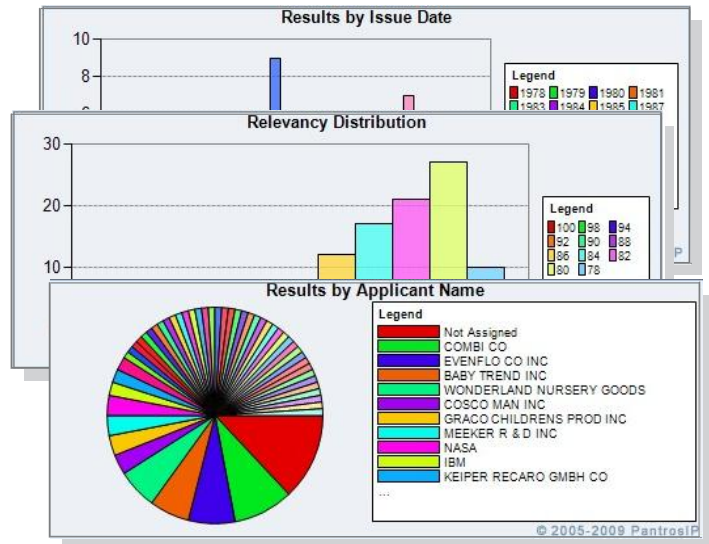
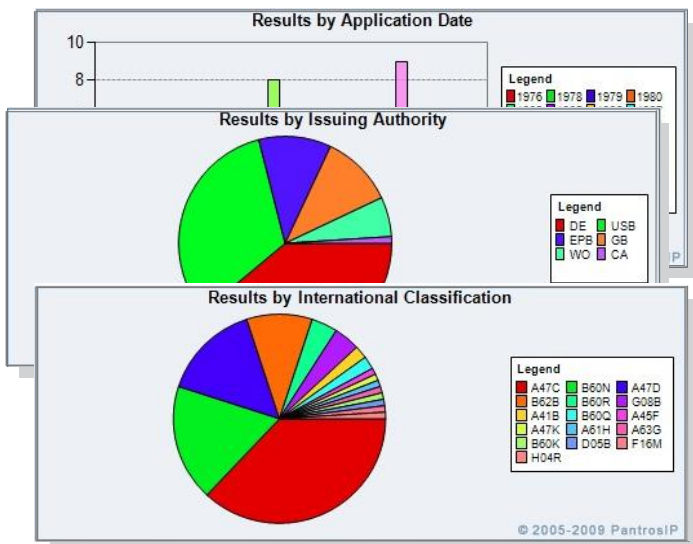
What is the ProSearch Advantage:

- Obscurity Discovery
- Risk Management
- Technology & Product Mapping
- Prior Art Searching
- Infringement Identification
- Patentability
- Advanced Competitor Intelligence
- Product to Patent Mapping
- Portfolio Management
- Licensing Identification



Search results can be mapped by technology groups, or by dynamically generated analytics charts and graphs, allowing you to visually analyse your results.

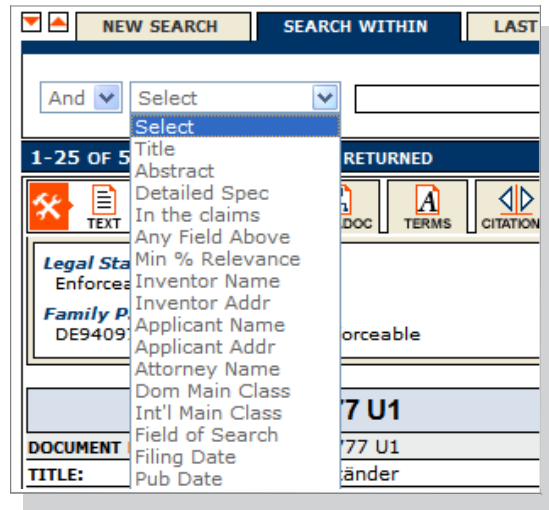
ProSearch provides user customisable workspaces and proprietary computed patent data fields.



FEATURES

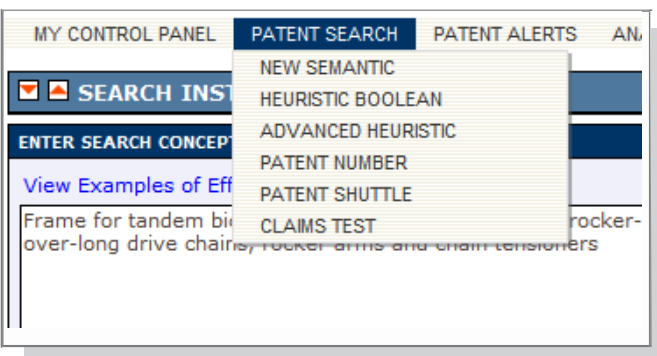
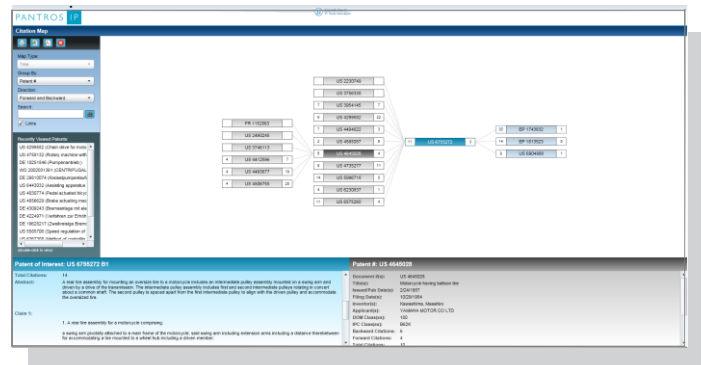
Multiple **Search within** options can be selected to fine tune search results.

The **More Like This** automated claims search functionality shows the activity level of all parties busy in the technology field and ranks the patent of interest by relevance percentage.



Citation Mapping

The Interactive Citation Analytics Tool creates visualised plotting of global patent citations revealing technology or competitor mapping, diffusion or advancement to quickly identify opportunities for commercialization and strategic direction. The Citation Map graphically visualizes citation trees based on individually selectable bibliographic information.



Heuristic Boolean and Advanced search allows you to search Boolean keywords or key phrases, separated by Boolean Operators. The advantage of the Heuristic Boolean and Advanced search is the ability to relevancy rank Boolean "hits". By applying a full text Semantic query in combination with the Boolean search, all matching Boolean search results are now ranked by relevance from the semantic search query placing the most relevant hits to the top of the list.

MULTIPLE SEARCH OPTIONS

The [Clustering](#) tool identifies the core technology taught by the patents. It allows you to group patents based on their technology field which is represented by technical keywords as an extract of your entire patent document concept search.

CONCEPT	DOM. CLASS	IPC CLASS	APPLICANT	APPLIC. DATE	ISSUE DATE	COUNTRY
Land Vehicles; Wheeled; Running gear; Short turn; Four-wheel controlled; Oppositely swinging axles (6)	None (67)	B60K (9)	GKN AUTOMOTIVE COMPONENTS INC (6)	2008 (6)	2010 (1)	DE (67)
	180 (13)	B60G (7)		2007 (2)	2009 (5)	US (3)
Motor Vehicles; Special Driving Device; Portable track; Endless, flexible; With ground wheel; Steering (5)	404 (5)	B65G (6)	GKN AUTOMOTIVE INC (2)	2006 (4)	2008 (2)	
	198 (2)	B25J (6)	SCHAEFFLER KG (2)	2005 (2)	2007 (5)	
	029 (2)	E01C (5)	STEMMANN TECHNIK GMBH (2)	2004 (4)	2006 (4)	
Land Vehicles; Wheeled; Running gear; Short turn (4)	128 (2)	F16D (5)	DAIMLER CHRYSLER AG (2)	2003 (11)	2005 (9)	
	173 (1)	B62K (5)		2001 (4)	2004 (4)	
Dentistry; Prosthodontics; Holding or positioning denture in mouth; By resiliently biased means; Acting between upper and	074 (1)	F16H (4)	HT MASCHVERTRIEB GMBH (2)	2000 (6)	2003 (3)	

[Patent Shuttle](#) is used to UPLOAD a list of patents for subsequent analysis, custom exporting, and downloading. Uploading a list of patents allows the user to immediately extract specific data points from those patents using the ProData Extract function. Available Bibliographic data fields include over 30 other data points only available by Pantros IP. Specialty computed data fields include the search relevance percentage, claim word count and the LSA Concept Cluster that clearly defines the core technology taught by the patents.

[Patent data exporting](#) and document / data downloading is standardized across all tools. You may convert all data through Pro Data Extract or the one click Run to Excel to create the current page to an Excel file. As a document delivery option to download PDF patent documents that you have individually checked in the search results screen or Bulk download data from up to 20,000 patents.

Dashboard and Topography

In your individual Control Panel you can elect to record session details, review your Activity History of previous search sessions that you may have recorded, retrieve documents from your Download Centre, including CSV data exports of search results data, Patent Factor Index reports

(Patent Quality Evaluation) that you may have generated, patent documents (PDF format) downloaded from a set of search results, or patents and patent data exported from Portfolio DSST[™] or Patent Competitive Intelligence Alerts, and complete account administrator functionality.

Pantros IP's web-accessible patent database is the largest full semantic online patent collection in the world. Our expanding collections are continually being processed to WIPO St. 36 and 6-Sigma patent data quality targets. Patent applications are available in our semantic database latest 24 - 48 hours after publication from authorities. If you have a requirement for patent collections not listed above, please contact us. We can provide additional patent collections on special request. We have access to over 90 Million patent documents.